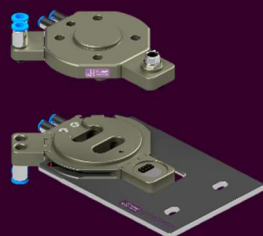


## Two-way automatic kit, built-in pneumatic + electric module + high flow

Part number: WM1-K-05-01

### AUTOMATIC KIT

PNEUMATIC + ELECTRIC + HIGH FLOW



WM1-K-05-01

PDF



### DESCRIPTION

With the **WINGMAN automatic kit**, you get the necessary items to achieve easy **manual** and **automatic** tool changes between two tools and with two channel built-in pneumatic pass-through, 8 pin electrical pass-through and two channel high flow pneumatic pass-through. The kit can be upgraded with additional pass-through modules for added pass-through capability.

The kit fits directly onto all collaborative robots with the standard ISO 9409-1-50-4-M6 flange.

\* One electrical cable is included either WM1 A-02-01 or WM1 A-02-02.

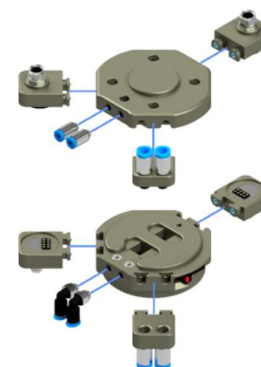
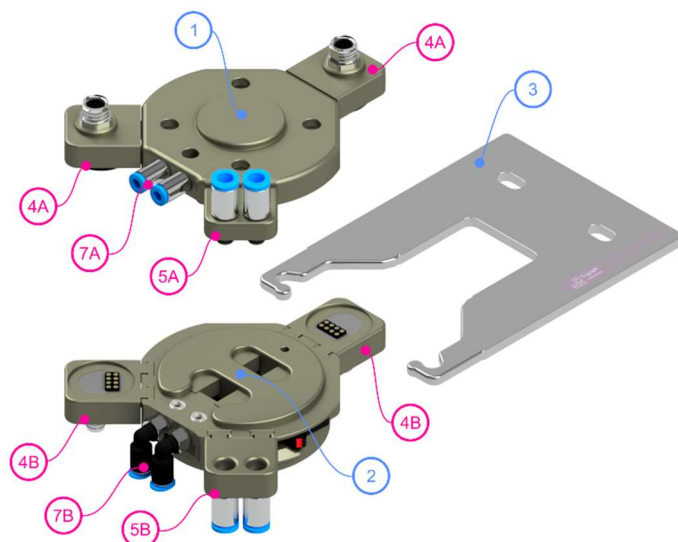
### INCLUDED ITEMS

Qty.:	Part no.:	Description:	Picture:	Qty.:	Part no.:	Description:	Picture:
1	WM1-P-01-01	<b>Robot part</b> including 4 pcs. screws and 1 pcs positioning pin.		1	WM1 A-01-01	Pass-through module, electric for <b>robot part</b> , M8 8 positions female.	
2	WM1-P-02-01	<b>Tool part.</b>		2	WM1 A-01-02	Pass-through module, electric for <b>tool part</b> , M8 8 positions male.	
2	WM1-P-03-01	<b>Tool part holder</b> including 2 pcs. wing screws.		(1*)	WM1 A-02-01	Electric cable 0,22 m for pass-through module, M8 8 pin, male/female connector L shape. For Cobots with <b>male</b> tool connector.	
3	WM1-A-06-01	Pass-through fitting, set 2 x M5 4mm hose I shape for <b>robot part</b> and <b>tool part</b> .		(1*)	WM1 A-02-02	Electric cable 0,22 m for pass-through module, M8 8 pin, male/male connector L shape. For Cobots with <b>female</b> tool connector.	
0	WM1-A-06-02	Pass-through fitting, set 2 x M5 4mm hose L shape for <b>tool part</b> .		0	WM1 A-02-03	Electric cable 5 m for pass-through module for <b>robot part</b> , M8 8 pin, male/open-end to connect to controller.	
1	WM1-A-04-01	UR cap software. License for use on one robot.		1	WM1-A-03-01	Pass-through module, High Flow for <b>robot part</b> , 2 x Ø6 mm hose fittings.	
1	WM1-A-05-01	Case for two-way automatic kit of any configuration..		2	WM1-A-03-02	Pass-through module, High Flow for <b>tool part</b> , 2 x Ø6 mm hose fittings.	

## Product data

### Overview and part numbers

#### PART NUMBERS



- Two built in pneumatic pass-throughs for M5 fittings.
- Three positions for interchangeable pass-through modules

Pos.:	Part no.:	Description:	Interfaces with:
1	WM1-P-01-01	Robot part including: 4 pcs. screws M6x12mm ISO 10642 1 pcs. positioning pin 6mmH6	Pos.: 2, 4A, 5A
2	WM1-P-02-01	Tool part	Pos.: 1, 3, 4B, 5B
3	WM1-P-03-01	Tool part holder including 2 pcs. wing screws.	Pos.: 2
4A	WM1-A-01-01	Pass-through module, electric for robot part, M8 8 positions female.	Pos.: 1, 4B
4B	WM1-A-01-02	Pass-through module, electric for tool part, M8 8 positions male.	Pos.: 2, 4A
	WM1-A-02-01	Electric cable 0,22 m for pass-through module, M8 8 pin, male/female connector L shape. For Cobots with <b>male</b> tool connector.	Pos.: 4A, 4B
	WM1-A-02-02	Electric cable 0,22 m for pass-through module, M8 8 pin, male/male connector L shape. For Cobots with <b>female</b> tool connector.	Pos.: 4A
	WM1-A-02-03	Electric cable 5 m for pass-through module for <b>robot part</b> , M8 8 pin, male/open-end to connect to controller.	Pos.: 4A
5A	WM1-A-03-01	Pass-through module, High Flow pneumatic for robot part, 2 x Ø6 mm hose fittings.	Pos.: 1, 5B
5B	WM1-A-03-02	Pass-through module, High Flow pneumatic for tool part, 2 x Ø6 mm hose fittings.	Pos.: 2, 5A
	WM1-A-04-01	USB with UR cap software for use with Universal Robots. License for use on one UR robot.	Universal Robots
	WM1-A-05-01	Case for two-way automatic kit of any configuration.	
7A	WM1-A-06-01	Pass-through fitting, set 2 x M5 4mm hose I shape.	Pos.: 1, 2
7B	WM1-A-06-02	Pass-through fitting, set 2 x M5 4mm hose L shape.	Pos.: 2

#### KITS

	WM1-K-00-00	Automatic kit, CUSTOMIZED
	WM1-K-01-01	Two-way manual kit
	WM1-K-02-01	Two-way automatic kit, pneumatic
	WM1-K-03-01	Two-way automatic kit, pneumatic + electric
	WM1-K-04-01	Two-way automatic kit, pneumatic + high flow
	WM1-K-05-01	Two-way automatic kit, pneumatic + electric + high flow
	WM1-K-06-01	Two-way automatic kit, pneumatic + two electric + one high flow
	WM1-K-07-01	Two-way automatic kit, pneumatic + three electric
	WM1-K-08-01	Two-way automatic kit, pneumatic + three high flow

#### SPARE PARTS

	WM1-S-01-01	Spare part kit for Tool Part levers WM1-P-02-01. (including 2 pcs. levers, 4 pcs. bearings, 2 pcs. springs and 2 pcs. pins.)	Pos.: 2
	WM1-S-01-02	Spare part kit for Tool Part lock pads WM1-P-02-01. (including 2 pcs. lock pads, 4 pcs. bearings, 2 pcs. spring supports, 2 pcs. springs and 2 pcs. pins.)	Pos.: 2