

Datasheet

SPACEMAN™ spacers



Part number: SM1-P-...



SM1-P-20-01-01

SM1-P-10-01-01

General information

The SPACEMAN™ Spacer Type 1 has the standard cobot ISO 9409-1-50-4-M6 flange on both sides.

PROPERTIES	
Material:	Surface treated aluminum (Color tone may vary)
Screws and dowel pin for Robot Part, included:	4 pcs. M6x12mm (ISO14580) 1 pcs. Ø6h6x12mm (ISO 6325)
INTERFACES	
SPACEMAN™ Adaptor, Type 1	Flange side 1: ISO 9409-1-50-4-M6 (male) Flange side 2: ISO 9409-1-50-4-M6 (female)

Fits on both sides of the WINGMAN™

The SPACEMAN™ can be Installed on both sides of the WINGMAN™ Cobot Tool Changer Interfacing with the WINGMAN Robot Part WM1-P-01-01-... and the WINGMAN Tool Part M1-P-02-01-....



Stackable

The SPACEMAN™ can be stacked to create even more space. Each time you add a spacer, the tool flange will rotate 22,5 degrees.



© All rights reserved TripleA robotics ApS 2024. Reservations are made for errors, incorrect, missing or obsolete information

Datasheet

SPACEMAN™ spacers

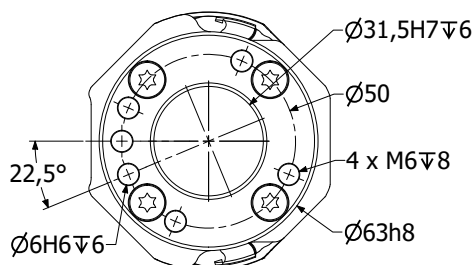
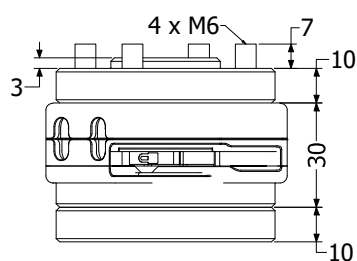
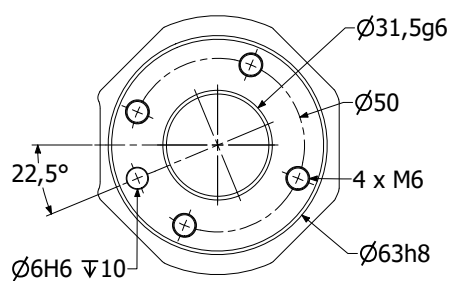


Part number: SM1-P-...

94g

SM1-P-10-01-01

SPACEMAN™ Spacer Type 1, 10mm



168g

SM1-P-20-01-01

SPACEMAN™ Spacer Type 1, 20mm

